



Specialty Timber Structures

Shelters Domes Specialty Timber Structures Potash Buildings



Salem Amphitheater, Salem, Oregon, USA

Speciality Timber Structures Division

CLT/MASS
TIMBER

TIMBER
BRIDGES

EXISTING TIMBER
STRUCTURES

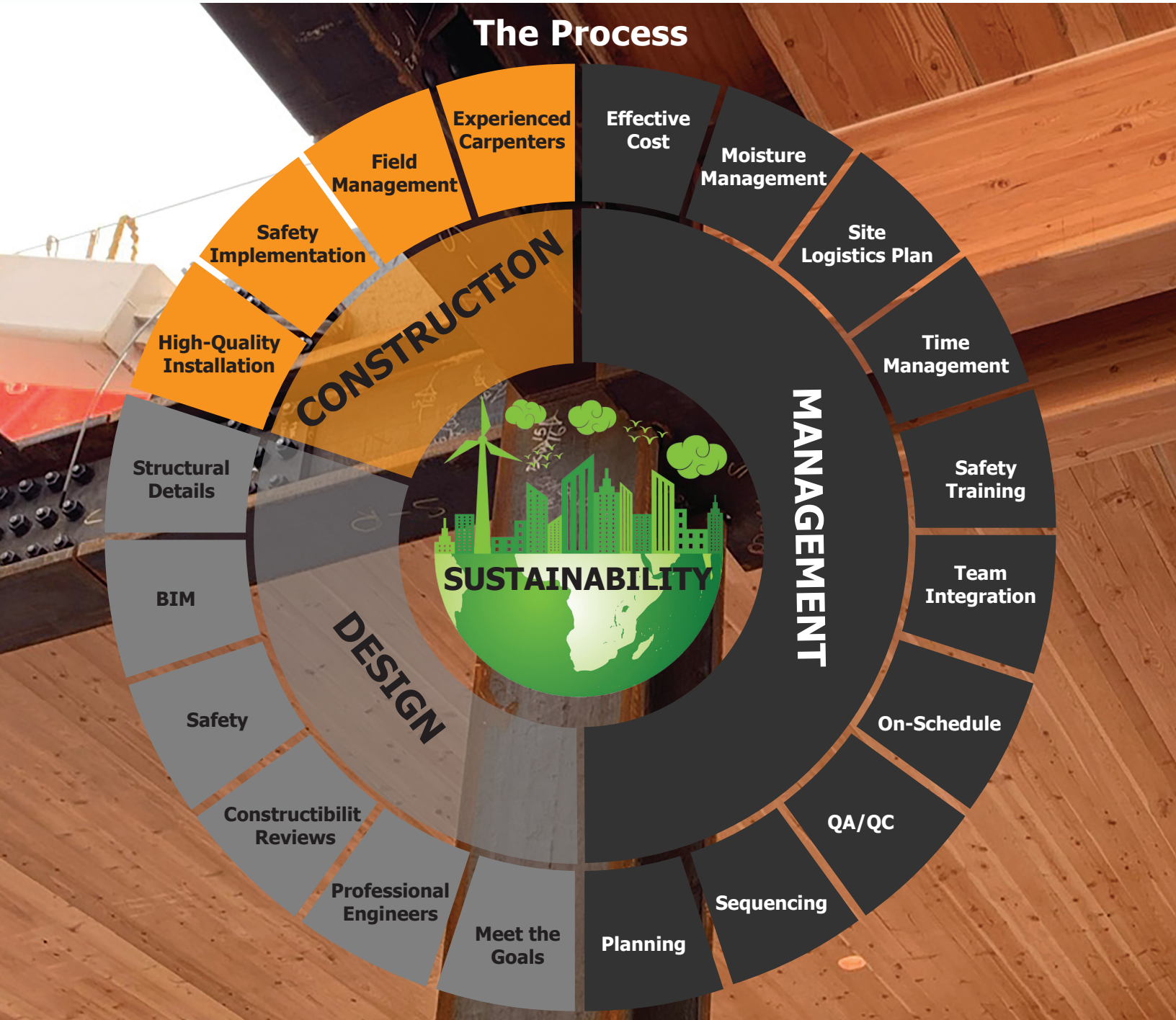
GLULAM &
HEAVY TIMBER

**SPECIALTY TIMBER
STRUCTURES**

TIMBER
SOUNDSTAGES

The WWS Advantage

Western Wood Structures has designed, supplied, and fabricated the world's largest timber domes as well as design thousands of timber shelters over the past 50+ years. Our in-house engineers and detailers are the most experienced in timber design and it allows WWS to work within a customer's vision, budget, and timeline for a full packaged timber structure. We have 50+ years of experience in the design, supply, and fabrication of Specialty Timber Structures. Wood is also an environmentally responsible and sustainable resource. Its carbon sequestering properties make building with timber more popular than ever.



Depend On Us to Assist You Every Step of the Way

1 Schematic Design

- ✓ Preconstruction Services
- ✓ Design Assist Options
- ✓ Budgeting
- ✓ System Selection
- ✓ Early Expert Advice

2 Design Development

- ✓ Design Support
- ✓ Product Selection
- ✓ Detail Economization
- ✓ Grid Optimization
- ✓ Logistics Planning

3 Contract Documents

- ✓ Coordination With Trades
- ✓ Review & Feedback

4 Quoting

- ✓ Complete Package Labor & Material
- ✓ CLT, MPP, GLT, GLB, Fasteners, Hardware
- ✓ System Selection

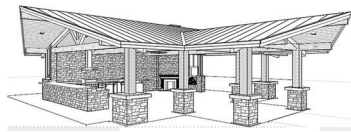
5 Submittals

- ✓ Project Management
- ✓ Timely Communication
- ✓ 3D Modeling
- ✓ Shop Drawings
- ✓ PE Reviews and Seals

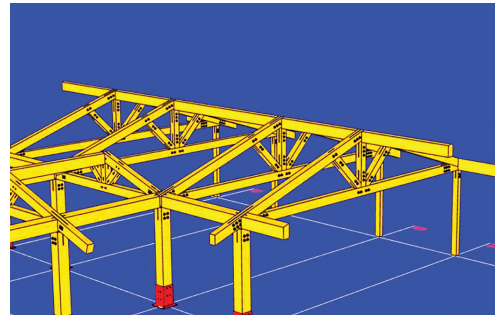
6 Fabrication

- ✓ CLT, GLB, and Heavy Timber CNC
- ✓ Factory Installed Hardware
- ✓ Shop Installed Tie-Rod Epoxy
- ✓ Custom Steel Fabrication

Design-Supply-Fabricate



Shelter Idea



Design



Build

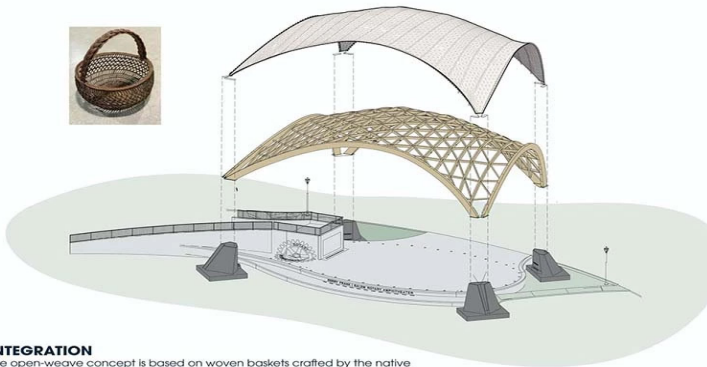


Completion

Gerry Frank Salem Rotary Amphitheater

Salem, OR

WWS constructed the basket-weave canopy on the Gerry Frank Salem Rotary Amphitheater in Salem, OR. Constructed from laminated Douglas fir timber, the canopy will be a combination of elegance and strength, designed to withstand strong winds.



INTEGRATION
The open-weave concept is based on woven baskets crafted by the native Kalapuya Tribe who historically inhabited the Riverfront area



Terminal 5 Potash Storage Building

Portland, OR

Mass Timber Potash storage buildings have been used for storing potash for decades. Potash, a salt-like fertilizer, is mined and then transported near ports for storage and ultimate shipment overseas. Due to potash's corrosive nature to steel, timber buildings using engineered wood products are the preferred building type. These buildings are some of the largest Mass Timber Buildings in the world on a PSF basis.



Custom Timber Structures



Christ the Light Cathedral

Oakland, CA

WWS designed (4) massive 90' glulam's each weighing in excess to 10,000 lbs. to support the structural roof of this project. The glulam's were all pre-notched and drilled allowing for quick installation on jobsite.



Domes



Tacoma Dome

Tacoma, WA

The 530 ft clear span VARAX timber dome utilizes a series of purlins and arched beams. The steel hubs accommodate all glulam members as well as forces such as axial tension, compression, shears, and moments.

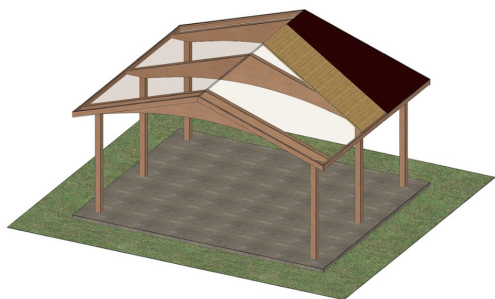


Shelter Design Concepts

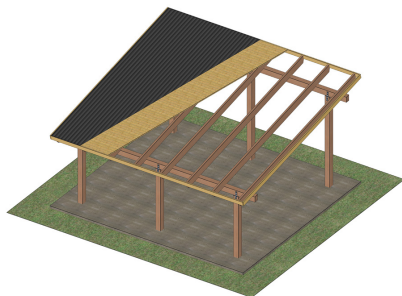
Truss Shelter



Peak & Camber Glulam



Mono Slop Shelter



Design Assist & 3D Modeling



LeMay - America's Car Museum | Tacoma, WA

Design Assist: Providing input and advice on the structural design, including selection of materials, connections, and finishes.

Engineering Support: Conducting detailed structural analysis and calculations to ensure the safety and performance of the structure, including collaboration with the project team to optimize designs for efficiency and constructability.

Fabrication Coordination: Coordinating with our fabrication teams to ensure that the design and engineering specifications are properly communicated and implemented during fabrication.

Installation: Providing on-site support during installation to ensure that the design and engineering specifications are properly implemented, helping to ensure the structure is being built to the required quality standards.

Some additional WWS services provided during the Design Assist phase and fabrication phase are as follows:

- Reviewing and refining architectural and structural designs to optimize design.
- Developing shop drawings for specialty timber components
- Performing engineering analysis and design calculations for the Specialty Timber structures

Overall, a Design Assist subcontractor plays a critical role in ensuring the successful execution of a Specialty Timber Project, from initial concept development to final assembly, and all required coordination in between.

Working Wonders with Wood



Lloyd Knox Visitor Shelter

Leaburg Lake, OR

Western Wood Structures has been designing, building and installing engineered Mass Timber systems for over 50 years. Our experience is unmatched in the design and wholesale distribution of engineered glulam beams and arches, heavy timber trusses, timber bridges, the repair of wood beams and trusses, and VARAX domes.



Western Wood Structures Inc.

20675 SW 105th Ave., Tualatin, OR 97062

Phone: (503) 692-6900 692-6900 or (800) 547-5411

Dan Herr / Project Manager

dan@wwsi.com

www.wwsi.com